

The Primary PE and sport premium

Planning, reporting and evaluating website tool

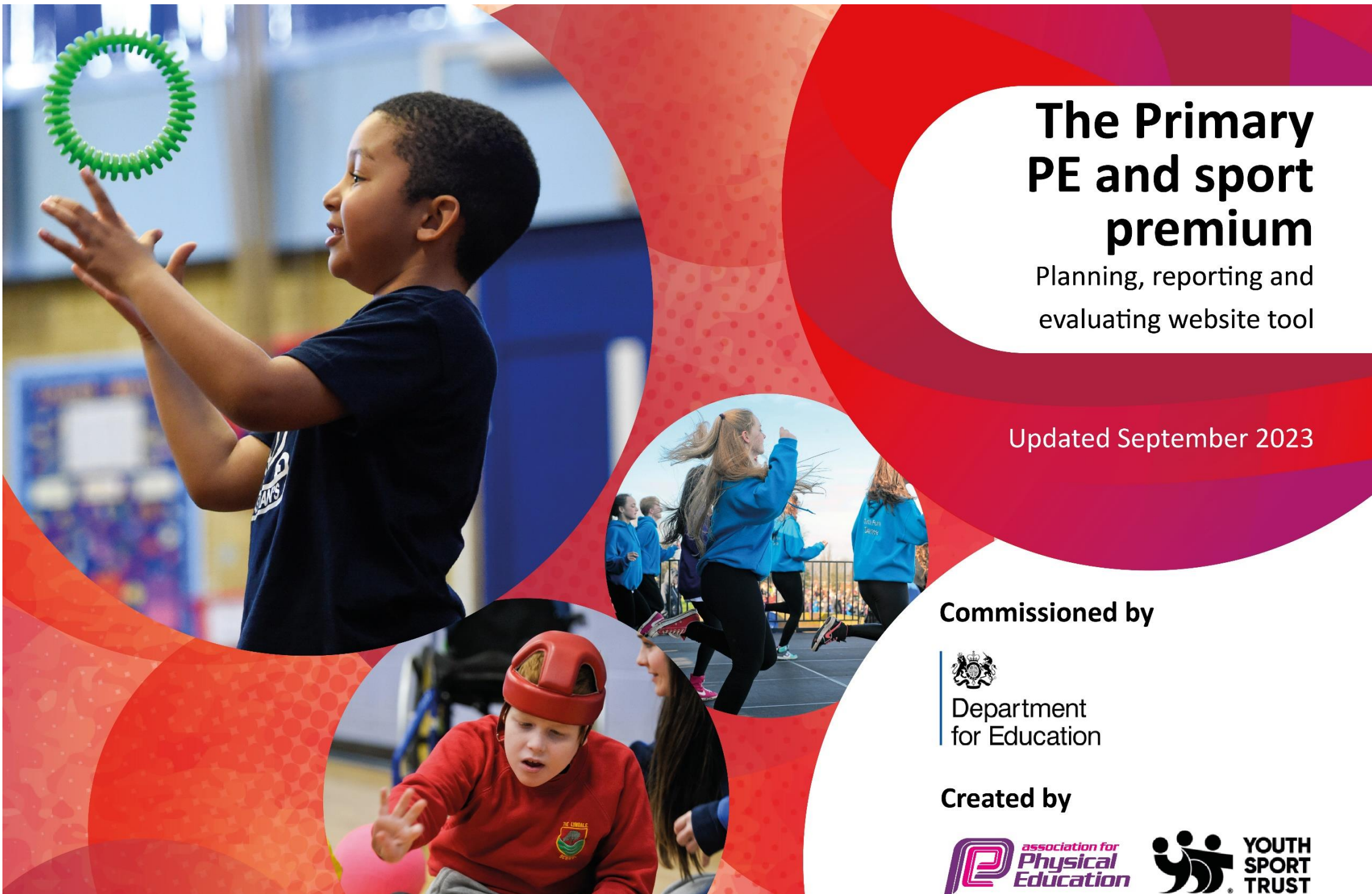
Updated September 2023

Commissioned by



Department
for Education

Created by



This template can be used for multiple purposes:

- It enables schools to effectively plan their use of the Primary PE and sport premium
- It helps schools to meet the requirements (as set out in guidance) to publish information on their Primary PE and sport premium
- It will be an effective document to support Ofsted inspections enabling schools to evidence progress in Physical Education (PE) and evidence swimming attainment, which forms part of the PE National Curriculum. We would recommend schools consider the Intent, Implementation and Impact of any spend, as examined within the Education Inspection Framework.

It is important that your grant is used effectively and based on school need.

Schools must use the funding to make **additional and sustainable improvements** to the quality of the PE, School Sport and Physical Activity (PESSPA) they offer. This means that you should use the Primary PE and sport premium to:

- Build capacity and capability within the school to ensure that improvements made now will benefit pupils joining the school in future years
- Develop or add to the PESSPA activities that your school already offers.

The Primary PE and sport premium should not be used to fund capital spend projects; the school's core budget should fund these. Further detail on capital expenditure can be found in the updated [Primary PE and sport premium guidance](#).

The Primary PE and sport premium guidance, outlines 5 key priorities that funding should be used towards. It is not



necessary that spending has to meet all the key priorities, you should select the priorities that you aim to use any funding towards.

Although completing this template is not a requirement for schools, schools are required to publish details of how they spend this funding. Schools must also outline what the impact this funding has had on pupils' PE and sport participation and attainment and how any spending will be sustainable in the future. **All funding must be spent by 31st July 2024.**

The Department for Education has worked closely with the Association for Physical Education (afPE) and the Youth Sport Trust (YST) to develop this template and encourages schools to use it. This template is an effective way of meeting the reporting requirements of the Primary PE and sport premium.

Review of last year's spend and key achievements (2022/2023)

We recommend you start by reflecting on the impact of current provision and reviewing your previous spend.

Activity/Action	Impact	Comments
Invest in new equipment for PE lessons.	Equipment is more accessible for lessons.	Continue to perform audits on equipment to ensure children have access to high quality/ age appropriate equipment.
Hire David Weir Athletics track for KS2 sports day.	Children had the opportunity to use a high-quality facility.	Review and book the venue for the full day.
ECT PE training	ECT's attended 5 PE workshops.	Continuation of supporting staff
Merton School Sports Partnership affiliation.	Children attended over 40 competitions. The school had a mock 1-day PE deep dive.	Continue the affiliation with MSSP and attend the inclusive events.
Year 3 children all attended a semi intensive swimming programme.	A higher percentage of children have reached the national expectation. Less children will need top up lessons when they reach year 6.	Review swimming model 2023/24.

Key priorities and Planning

This planning template will allow schools to accurately plan their spending.

Action – what are you planning to do	Who does this action impact?	Key indicator to meet	Impacts and how sustainability will be achieved?	Cost linked to the action
Increase the number of structured physical activities.	<i>Sports Coaches- leading free morning clubs for KS1 and KS2 pupils.</i>	Key indicator 1	<i>A higher percentage of children will be physically active before school.</i>	<i>£140 per week 39 weeks = £5,460</i>
Invest in equipment used solely for PE curriculum lessons.	<i>Pupils – They have access to high quality/ age appropriate equipment.</i>	Key indicator 1	<i>Children will more likely enjoy PE lessons and are more likely to take part in physical activity outside of school.</i>	
<i>Rewards for the PE NED Champion</i>	<i>Pupils – are rewarded for working hard in PE</i>	Key indicator 2	<i>Children are more likely to behave and work hard during PE lessons.</i>	<i>£100 – Medals to be given out weekly.</i>
Guest Speaker – Jamie Knight	<i>Pupils taking part in the workshops</i>	Key indicator 2	<i>Children are inspired by a guest speaker & learn new skills/ tricks during the workshop</i>	<i>£500- KS1 & KS2 assembly and workshops.</i>
Gymnastics training	<i>Coach – Sport specific CPD</i>	Key indicator 3	<i>Two Gymnastics after school clubs will be available for pupils to join. Staff to get regular CPD and mentoring.</i>	<i>£250</i>
PE Review	<i>Leo Academy PE Director to complete a 1-day PE inspection which will cover all aspects of the PE curriculum including lesson observations & feedback</i>	Key indicator 3	<i>Feedback discussed with SLT and PE subject lead.</i>	<i>£300</i>
<i>50% of the curriculum swimming lessons (children previously had 30-minute lessons this has been increased to 60-minute lessons)</i>	<i>Pupils have longer in the pool.</i>	Key indicator 4	<i>More children are likely to meet the national expectation.</i>	<i>£1700</i>
<i>Top up swimming lessons for children in year 6 that are not able to swim 25m</i>	<i>Pupils – have another opportunity to attend swimming lessons.</i>	Key indicator 4	<i>More children are likely to meet the national expectation.</i>	<i>£850</i>

CONFIDENTIAL

<i>Merton School Sports Partnership affiliation fee.</i>	<i>Pupils – access to weekly competitions. Coach – Two conferences per year.</i>	Key indicator 5	<i>Children have more opportunities to access competitive sports events and festivals.</i>	£3,100
<i>Transport to two Leo events</i>	<i>Pupils have the opportunity to take part in additional competitions</i>	Key indicator 4	<i>Increased opportunity for friendly competition</i>	£70
<i>Sports Day David Weir Athletics track hire.</i>	<i>Pupils – have the opportunity to take part in a sports day in a high-quality facility.</i>	Key indicator 5	<i>Children are more likely to feel inspired and enjoy the sports day.</i>	£421
<i>Track markings on the field for sports day practice (heats) and for KS1 sports day.</i>	<i>Pupils – running track for pupils to practice.</i>	Key indicator 5		£300
<i>Medals for sports day.</i>	<i>Pupils – have a reward for doing well on sports day.</i>	Key indicator 5	<i>Children are more likely to try hard during sports day</i>	£300

Key achievements 2023-2024

This template will be completed at the end of the academic year and will showcase the key achievements schools have made with their Primary PE and sport premium spending.

Activity/Action	Impact	Comments
Top up swimming lessons and swim tests provided to year 6 children	Increased number of children meeting the national expectation and understanding water safety	Will continue to provide top up lessons to children in year 6
Increased equipment and opportunities for sports leaders	More children have the opportunity to take part in physical activity during breaks	PE lead to meet with sports leaders to discuss new ideas and equipment needed
Guest Speaker & workshops Football freestyler	Children have more awareness of freestyling and are inspired, children have been left inspired and learnt the skills taught in the workshops	Will continue to identify potential guest speakers to inspire KS1 and KS2 children
Hire the David Weir Sports track and inside facilities to host the KS2 Sports day	Children had the opportunity to compete on a fantastic facility and are more likely to be engaged within the sports day	Review sports day, gain feedback from staff, children and parents

Swimming Data

Meeting National Curriculum requirements for swimming and water safety.

Priority should always be given to ensuring that pupils can perform safe self-rescue even if they do not fully meet the first two requirements of the National Curriculum programme of study

<u>Question</u>	<u>Stats:</u>	<u>Further context</u> <u>Relative to local challenges</u>
What percentage of your current Year 6 cohort can swim competently, confidently and proficiently over a distance of at least 25 meters?	40%	<i>Children didn't attend curriculum lessons in year 3 due to Covid 19. Lack of opportunities to take children swimming due to availability at local pool.</i>
What percentage of your current Year 6 cohort are able to perform safe self-rescue in different water-based situations?	70%	<i>Use this text box to give further context behind the percentage.</i>

<p>If your schools swimming data is below national expectation, you can choose to use the Primary PE and sport premium to provide additional top-up sessions for those pupils that did not meet National Curriculum requirements after the completion of core lessons. Have you done this?</p>	Yes	<p>All Year 6 children that could not provide proof of swimming the national expectation of 25meters were offered 3 hours' worth of lessons within a week. This was funded via the sports premium.</p>
<p>Have you provided CPD to improve the knowledge and confidence of staff to be able to teach swimming and water safety?</p>	Yes	<p>Staff attended the swimming lessons and were able to assist with the learning and go over water safety when children returned to school.</p>

Signed off by:

Head Teacher:	<i>Justin Dachtler – Headteacher</i>
Subject Leader or the individual responsible for the Primary PE and sport premium:	<i>Dominic Paul – PE Subject lead</i>
Date: July 2024	